

HENRY O'LEARY

Email: property@hol.ie, Tel: 023 88 35959

**AUCTIONEERS &
REAL ESTATE AGENTS**

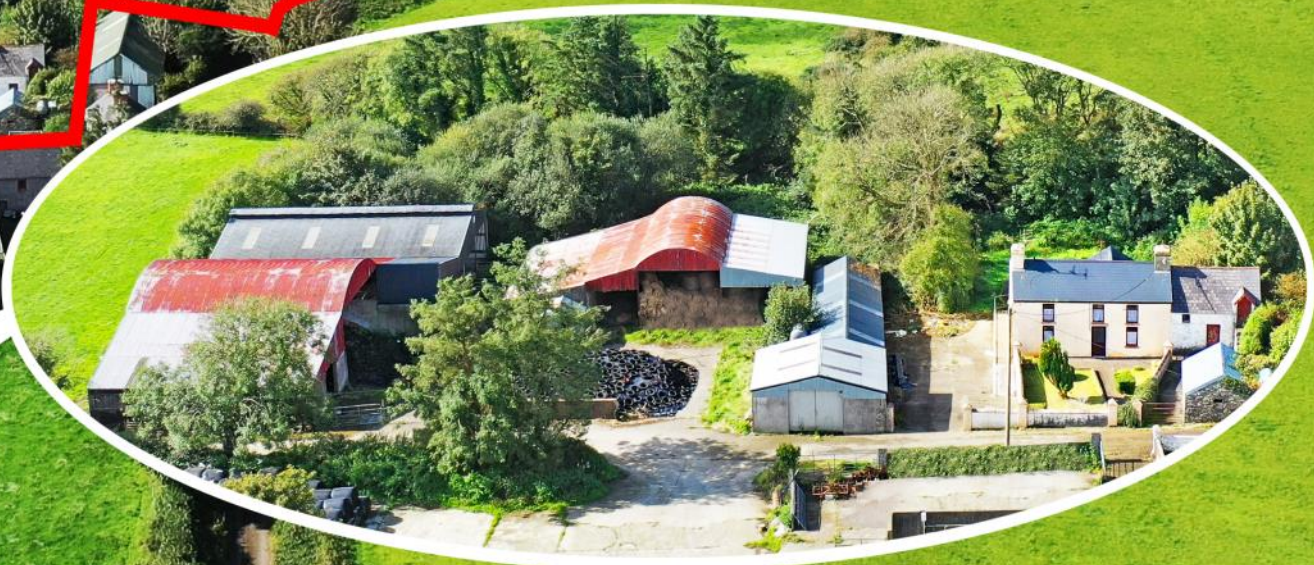
WWW.HOL.IE

Castleventry, Clonakilty, West Cork, P85 K377

Traditional farmhouse on 9 acres with a large selection of farm buildings and an option to acquire more land.

House & Farm Building
On 9 Acres

Guide Price: €300,000



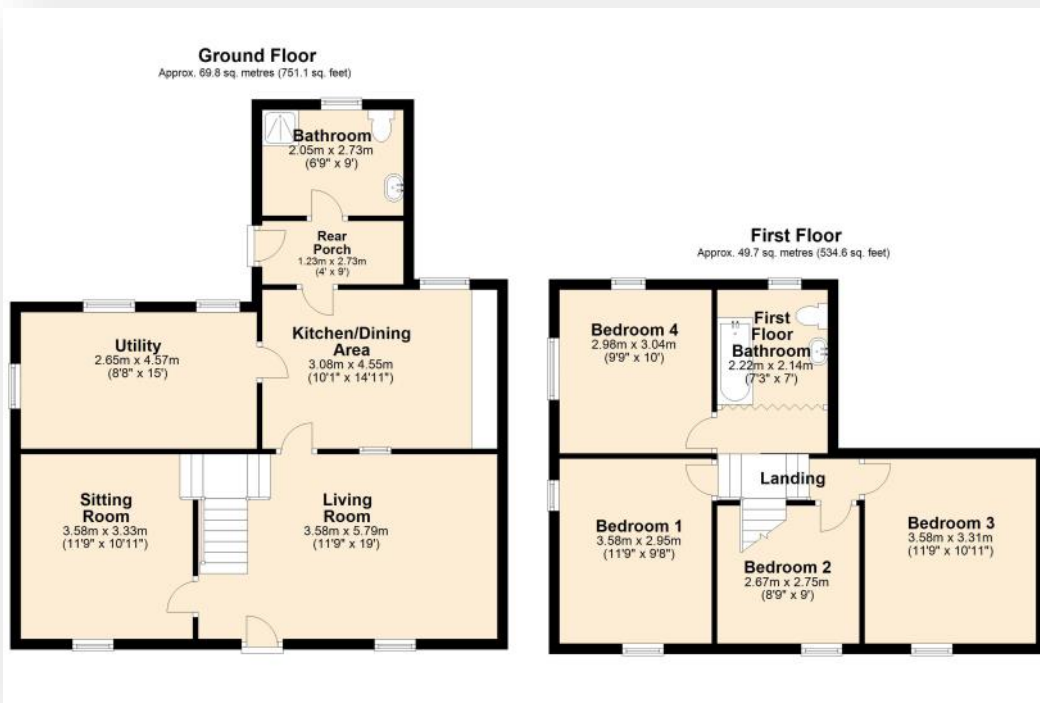


Simply awaiting renovation, it has all the right ingredients to make a truly spectacular property, the dwelling is a real diamond in the rough, it has been vacant for more than two years so it should qualify for grants to renovate if you are a qualifying purchaser. It extends to approx. 1300sq. ft. and its current layout features 4 bedrooms and two bathrooms. The roof was recently replaced but internally it's in need of complete renovation.

The farm buildings are extensive and include a stone-built stables/storage block closest to the house, next there is a three-bay hayshed with double lean-to, the lower section is a more recent addition, it contains a covered area of approx.. 6,000 sq. ft. including a slatted shed with 40 cubicles, a covered walled silage pit, and a part-slatted loose shed.

The land is to the west of the buildings, it is gently sloping with a southerly aspect. There is a natural spring well in the top half of the land, the well needs a drain to take the overflow away as it is currently wetting the surrounding area.

Consider the possibilities ... there's so much potential in a property that is also very convenient with the town of Clonakilty and Rosscarbery both just 9km away, Cork city and airport are just 55km away.





HOUSE & FARM BUILDING ON 9 ACRES

No responsibility is taken for any error omission or misunderstanding in these particulars which do not constitute an offer or contract.
Services and appliances have not been tested and therefore no warranty is offered on their operational condition.

Auctioneers, Estate Agents & Property Consultants

1 Lamb Street, Clonakilty, Co. Cork, Ireland. Tel: 023 88 35959, Fax: 023 8835960
Registration No. 284879, V.A.T. No. E8284879J PSRA Registration No. 001367

